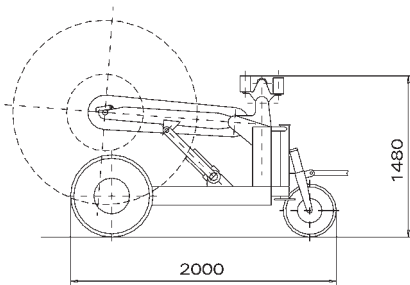


The reel winders are suitable to work with any hydraulic power unit, in particular with pullers and puller-tensioners, and operate as separated winding systems. They are equipped with automatic level wind and negative self-acting hydraulic brake. The frame is made of welded steel with protective coating. The reel winders can lift the reel by hydraulic jacks powered by the same hydraulic source



Kit of connecting hoses (only for mod RVA 001)

TUT 001 length 7 m
TUT 002 length 10 m
TUT 003 length 15 m



Mod. RVA 001

Model	Model capacity [kN]	Model torque [kNxm]	Model rotating speed [rpm]	Mass [kg]
RVA 001	20	1	50	525
RVB 600	70	2,7	35	1770

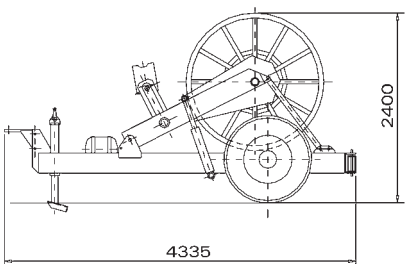
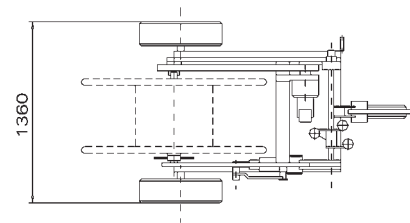
The reel winder mod. RVA 001 is also equipped with rigid semiaxles for manual towing and can operate with the standard reels mod. BOF 010 and BOF 020. The capacities are indicated in the following table

Reel mod. BOF 010

Ø rope [mm]	10	12	13	14	16	18	20	22	24
Rope capacity [m]	2400	1600	1600	1100	900	-	-	-	-

Reel mod. BOF 020

Ø rope [mm]	10	12	13	14	16	18	20	22	24
Rope capacity [m]	3600	2400	2400	2200	1800	1200	1000	900	800



Mod. RVB 600

The reel winder mod. RVB 600 is also equipped with:

- steel reel mod. BOF 060 with capacity indicated in the following table
- manual front plough stabiliser
- connecting hoses kit 15 m length
- lighting system

- pneumatic brake system
- rigid semiaxles for towing at max speed of 30 km/h with mechanical parking brake

OPTIONAL

BOF 060 Reel full of pulling system

Built-in reel

Ø rope [mm]	10	12	13	14	16	18	20	22	24	26	28
Rope capacity [m]	19200	13600	11200	9600	7200	5600	4000	3600	3200	2100	2400

